

# Moose Creek Water Expansion Project Update

- HC Contractors is beginning excavation and waterline installation operations for the Moose Creek Water Expansion Project beginning 5-18-20 along Laurance Rd. and Probert. See below provided map of the work areas.
- Work hours will take place from 6 AM to 6 PM Monday thru Saturday.
- Flaggers will be working adjacent to operations and within the work area to notify traffic of work operations. Traffic control and lane closures will be set up as necessary to protect the public and workers.
- Please proceed around work operations with care, expect to see heavy equipment and crews working.
- Limited access to local roadways and driveways will be reduced to a minimum during all work operations but impact cannot be completely avoided. We apologize in advanced for any delays and will work diligently to reduce the impacts from construction operations.
- Due to **COVID-19** and for safety of our workers and yourselves we ask that you do not approach field workers and crew members. If you have questions regarding the project or updates, please visit the project website or call the project phone line (information is provided below).
- For the safety of your children and family pets we request that you do not allow them to play on or near parked or operational equipment. Also, during work operations please keep children and pets away from work areas.

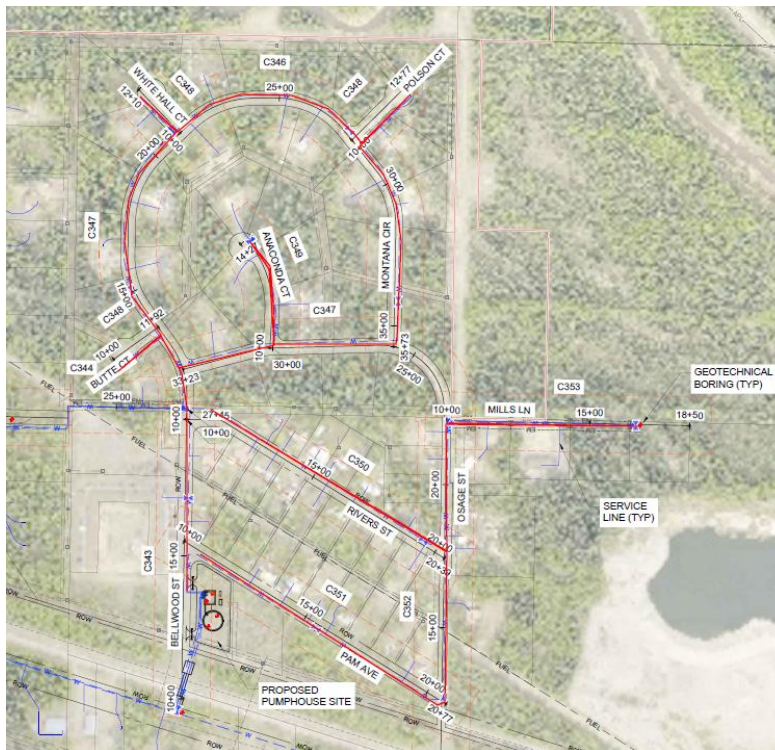


For more information please visit [moosecreekwater.com](http://moosecreekwater.com)  
Or Call 907-450-2848



# Moose Creek Water Expansion Project Update

- HC Contractors is beginning excavation and waterline installation operations for the Moose Creek Water Expansion Project beginning 5-18-20 in the Moose Creek Area. See next page for map of the work areas.
- Work hours will take place from 6 AM to 6 PM Monday thru Saturday.
- Flaggers will be working adjacent to operations and within the work area to notify traffic of work operations. Traffic control and lane closures will be set up as necessary to protect the public and workers.
- Please proceed around work operations with care, expect to see heavy equipment and crews working.
- Limited access to local roadways and driveways will be reduced to a minimum during all work operations but impact cannot be completely avoided. We apologize in advanced for any delays and will work diligently to reduce the impacts from construction operations.
- Due to **COVID-19** and for safety of our workers and yourselves we ask that you do not approach field workers and crew members. If you have questions regarding the project or updates, please visit the project website or call the project phone line (information is provided below).
- For the safety of your children and family pets we request that you do not allow them to play on or near parked or operational equipment. Also, during work operations please keep children and pets away from work areas.



For more information please visit [moosecreekwater.com](http://moosecreekwater.com)  
Or Call 907-450-2848

